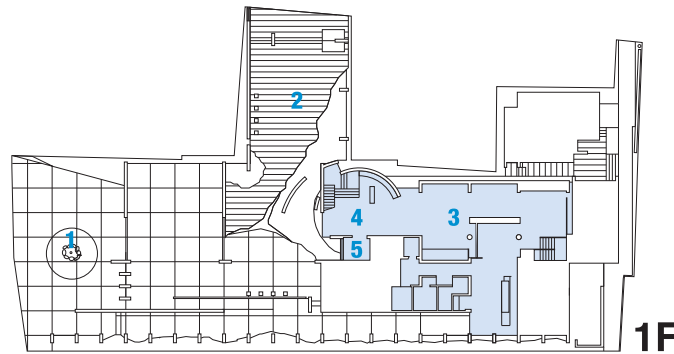


The Nakahara Chūya Memorial Museum opened on February 18, 1994 on the site of Chūya's birthplace so that visitors can better understand this important Japanese poet and learn about the environment in which he spent his youth. At the time, his birthplace was a large clinic on a large property in Yuda-onsen. Unfortunately, there was a huge fire on the property in 1972, which left behind only a storehouse and a small house for use in the tea ceremony. The property on which the museum is located consists of only a portion of the original premises. The museum exhibits important items which Chūya's family rescued from the fire. These include several of Chūya's manuscripts and personal mementos.

The Nakahara Chūya Prize was created to commemorate the opening of the museum, and the Nakahara Chūya Society was established in 1996. The museum continues to support these and other events related to the life and legacy of this important writer. The museum underwent a sizable remodeling in 2004. In 2014, a large scale renovation took place to renew the museum's facilities.



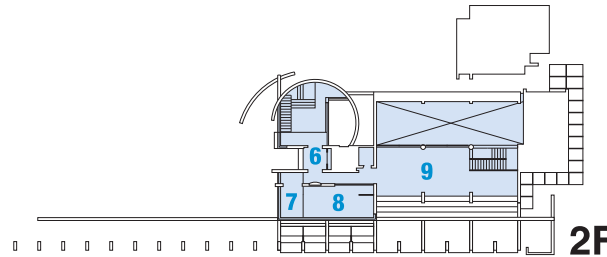
The Nakahara Chūya Memorial Museum is committed to improving its offerings to the public so that more people can become familiar with Chūya's writing and can enjoy the museum to the fullest. The museum aims to serve as a center devoted to the study of Chūya's life and work and to convey information about this great poet to the public.



The permanent exhibition space which starts at the entrance hall introduces the life of Chūya along with his achievements in chronological order.



**The Museum's History**  
The building was designed by Miyazaki Hiroshi, who won a prize for outstanding design as part of a nationwide competition for this building. In 1998 the building was chosen as one of the top 100 public buildings in Japan.



### 1. The Birthplace of Chūya

A monument inscribed with "The Birthplace of Chūya" stands by a Chinese juniper tree, which has grown in the same spot since Chūya's early childhood.

### 2. Courtyard

The courtyard path that leads visitors to the museum uses similar to that of the railroad ties in the JR Yamaguchi Line. At certain times of the year, there are outdoor displays to capture the attention of visitors.

### 3. Permanent Exhibition Gallery

This space showcases Chūya's life and achievements. It also encourages visitors to further explore Chūya's world of poetry from new perspectives.

### 4. Chūya Memorial Gallery

The gallery located in the center of the museum provides a reading space, which visitors can use freely.

### 5. Information Corner

Located next to the Chūya Memorial Gallery is an information corner, which is equipped with a touch screen panel that visitors can use to search for information about Chūya.

### 6. Hall

A bronze statue by the sculptor Takata Hiroatsu, a close friend of Chūya, is on display in the hallway.

### 7. Reference Room & Listening Corner

Visitors can use the reference room to do further research into Chūya's works and listen to musical settings of Chūya's poems and other sound resources.

### 8. Video Room

In this room, the museum shows the film *The Trajectory of Chūya*, created by the museum to showcase Chūya and his legacy. The film is available for viewing at all times.

### 9. Special Exhibition Gallery

In this gallery, the museum houses several special exhibits each year. These offering various perspectives on Chūya's life and legacy.

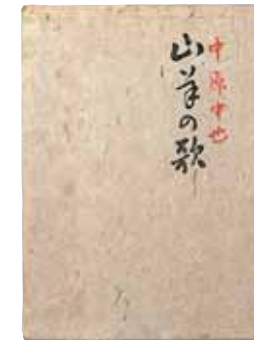


Chūya wrote his name on this name plate, which he used in Kamakura.



This photo shows Chūya on the first day of elementary school.

The permanent exhibit gallery includes a themed exhibit, which changes every year. In addition, it also collaborates with the special exhibit gallery to hold unique exhibits.



Chūya's first volume of poems *Yagi no uta* (*Songs of the Goat*)



Chūya's second volume of poems *Arishi hi no uta* (*Songs of Days Past*)



The Chūya Memorial Gallery, which connects the first and second floors, provides a relaxing space for visitors to read Chūya's poems and other books.



The courtyard is open to the public and provides explanations of poems related a specially chosen theme each year.